



Kaden Companies

Holiday Manor

www.KadenCompanies.com Phone: 502.456.1999

Location:

4800 US HWY 42
Louisville, KY 40222

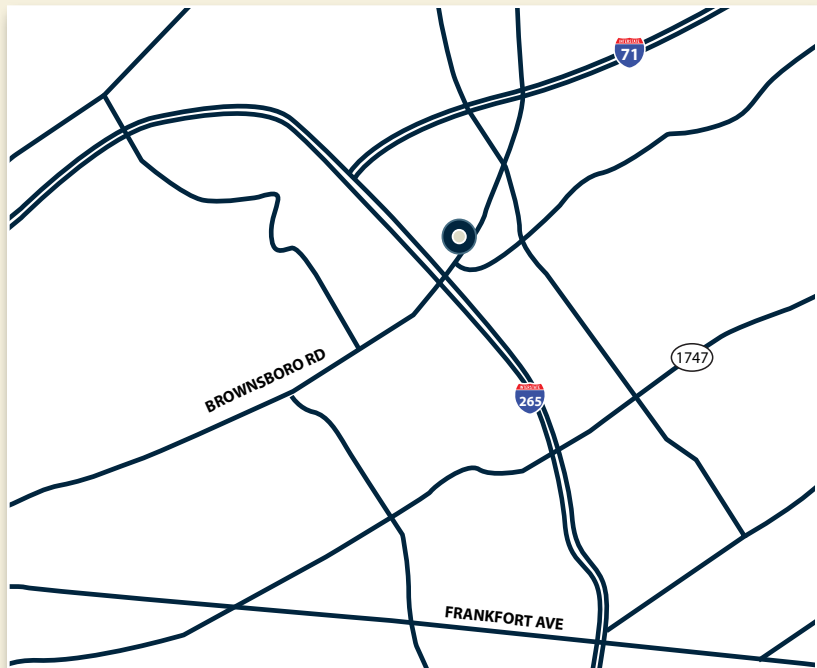
Amenities:

- Great location
- High traffic
- Directly off of Watterson Expressway (I-264)
- East End
- High disposable income



Holiday Manor is situated in the premier location of Louisville's East End community, attracting families of stature and high disposable income.

Featuring Kroger as an anchor tenant, this shopping center always draws an abundance of foot traffic. Holiday Manor boasts many shops, restaurants, and much more, making it an ideal site for your retail establishment.



Location

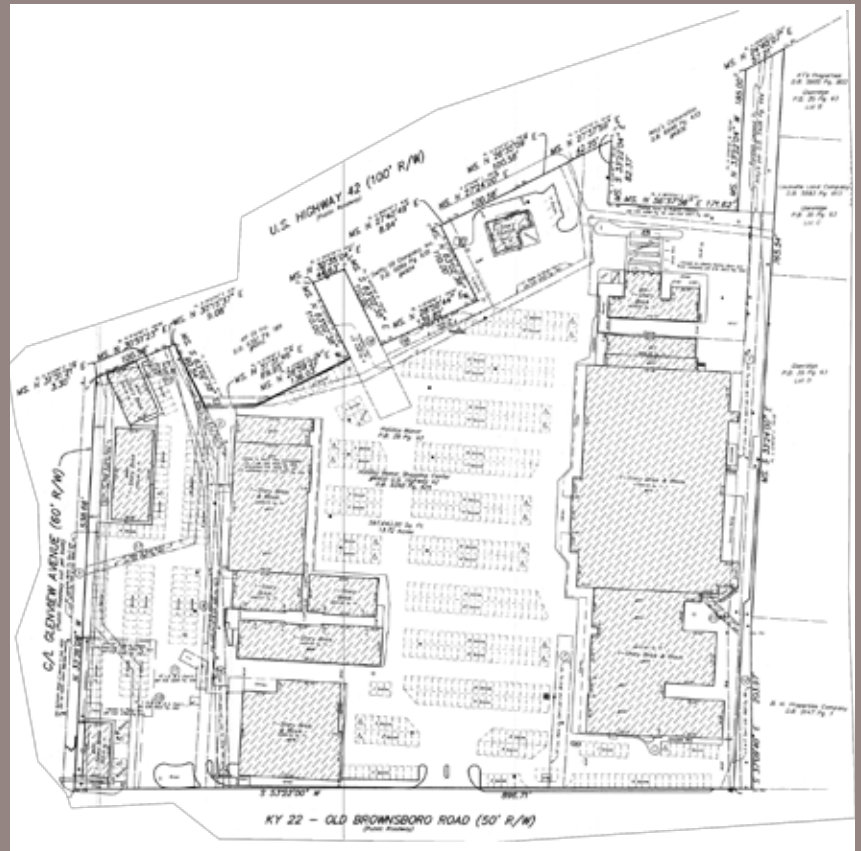
Demographics

	1-mi.	3-mi.	5-mi.
2009 Male Population	3,722	30,127	80,944
2009 Female Population	4,198	33,432	89,106
Total	7,920	63,559	170,050
2009 Total Households	3,340	28,043	75,982
2009 Median Household Income	\$92,900	\$71,318	\$65,205

Tenants:

- Emperor of China
- Arby's
- Bank One
- Complements
- Convenient Medical Care
- Dee's Crafts
- Feeder's Supply
- Fifth Third Bank
- First Lady II Nails
- Holiday Manor Shoe Repair
- Holiday Cleaners
- Jenny Craig
- Kim's Tailor
- Kroger
- T-Z Salon
- Liquor Express
- Mailboxes Etc.
- Mojito's
- Moore Jewelers
- Pizza Hut
- Rodeo Drive
- Shiraz Mediterranean Grill
- Starbucks
- Subway
- Sun Tan City
- Thai Cafe
- Valvoline
- Yoga East

Site Map



Aerial View

